



DDOT Urban Forestry Division

Caring for the Public's Trees

Brookland Neighborhood Civic Association

d.

March 21, 2023

Our Mission

To keep the District's tree canopy
healthy, safe, and growing.

Our Team

Tree Management Branch

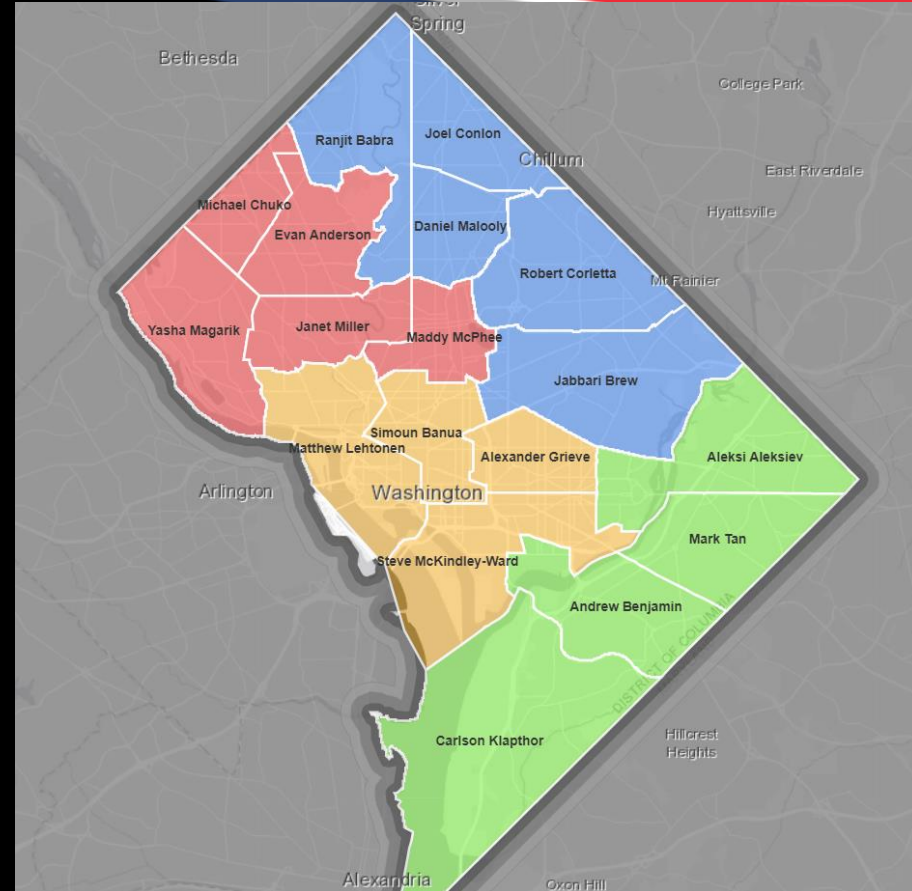
- State Forester
- Development team (6)
- Administration staff (2)
- Forest Health Coordinator

Urban Forestry Teams

- 18 Urban Foresters, 4 Supervisors

Tree Services Branch

- Supervisor
- 7 Tree Care Workers



What We Do

Directly

- Management of trees located on the street, schools, and in parks
- Public space permits
- Emergency response

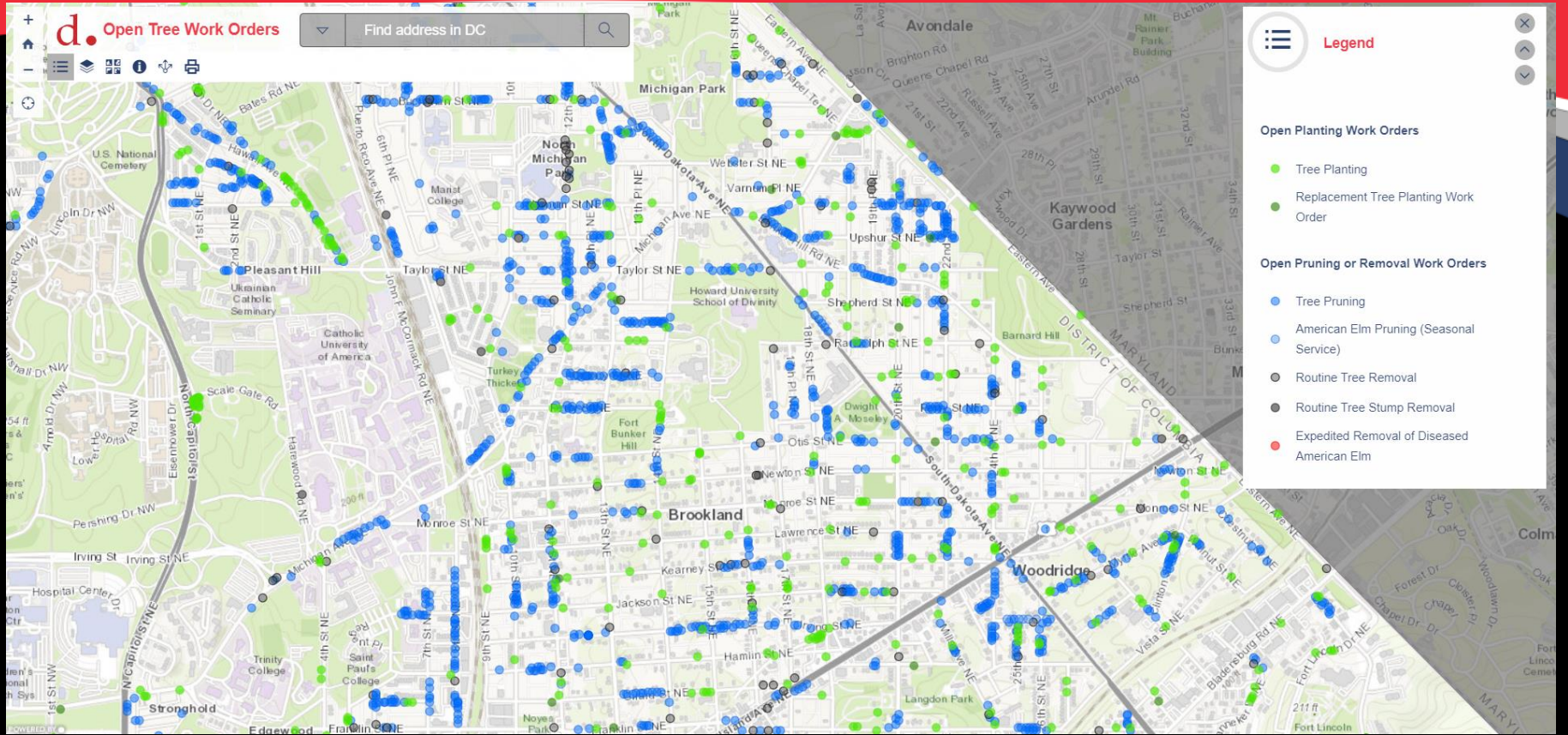
Indirectly

- Urban Forest Preservation Act 2002
- Tree Canopy Protection Amendment Act of 2016
- Urban Forest Preservation Authority Amendment Act 2022

Annual Routine Work

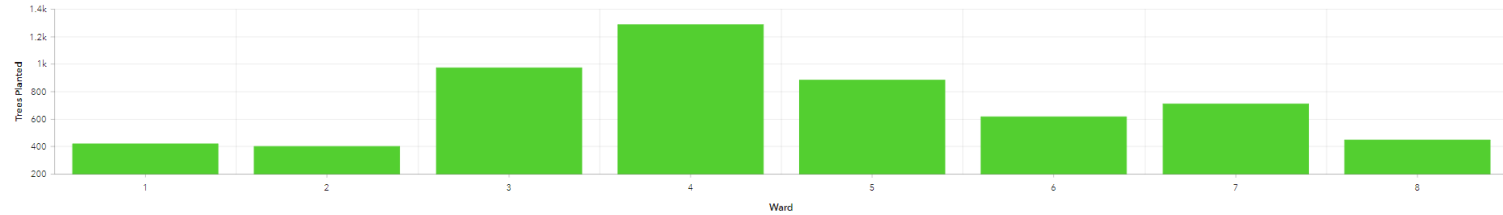
- 8,000 trees planted (10,500).
- 19,000 trees pruned.
- 3,500 trees removed.
- 15,000 requests for service.

BNCA Open UFD Tree Work Orders



Annual Planting Summary

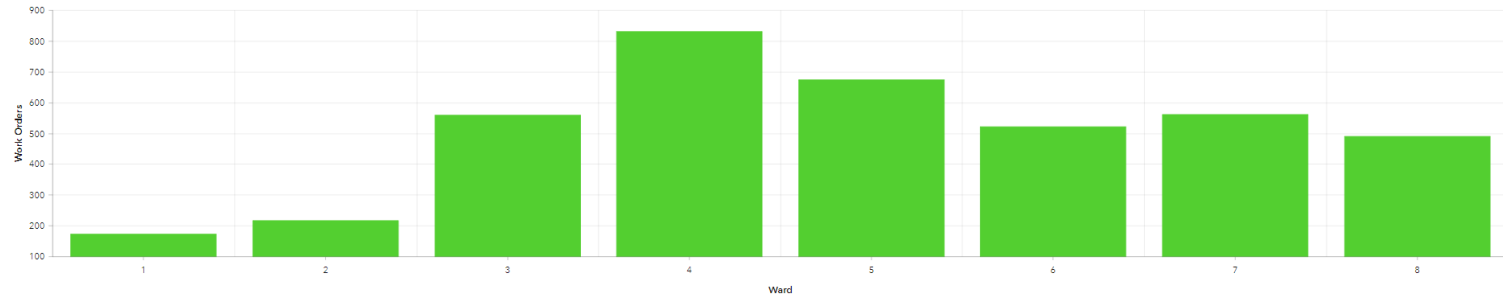
Trees Planted by Ward During Current Season



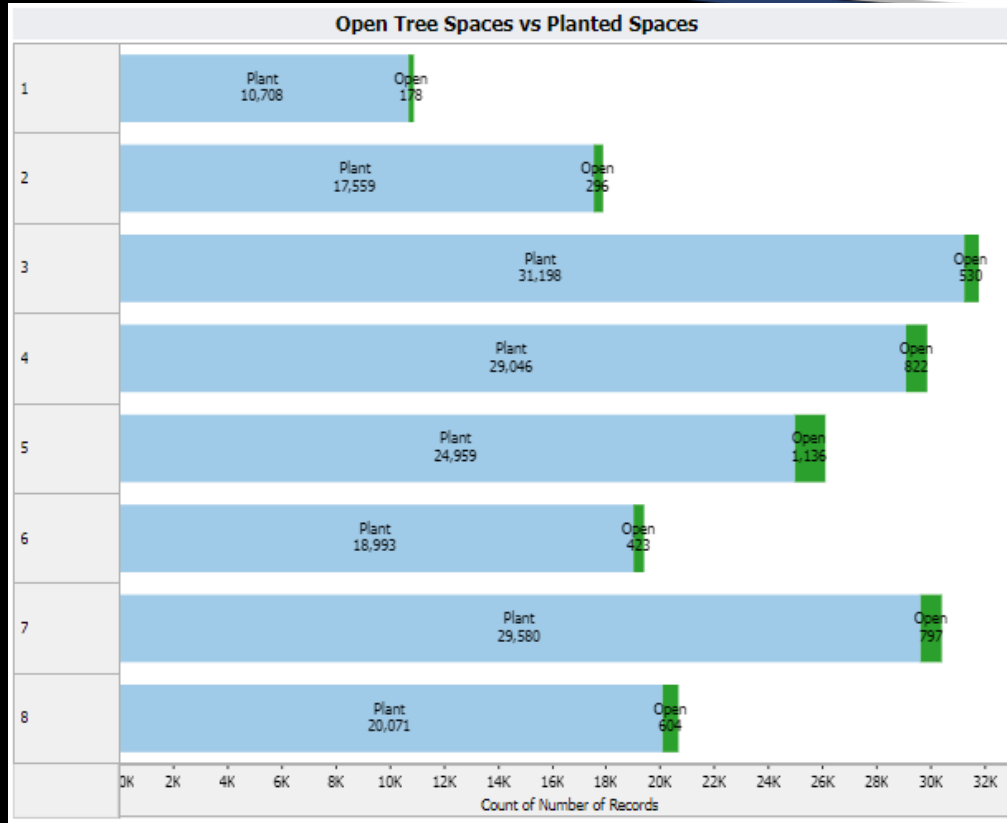
Trees Planted in FY2023 (and counting!)

5,743

Open Planting Work Orders by Ward



Stocking Levels in the ROW



Percentage of Open to Planted Tree Spaces

Open	2.56%
Plant	97.44%

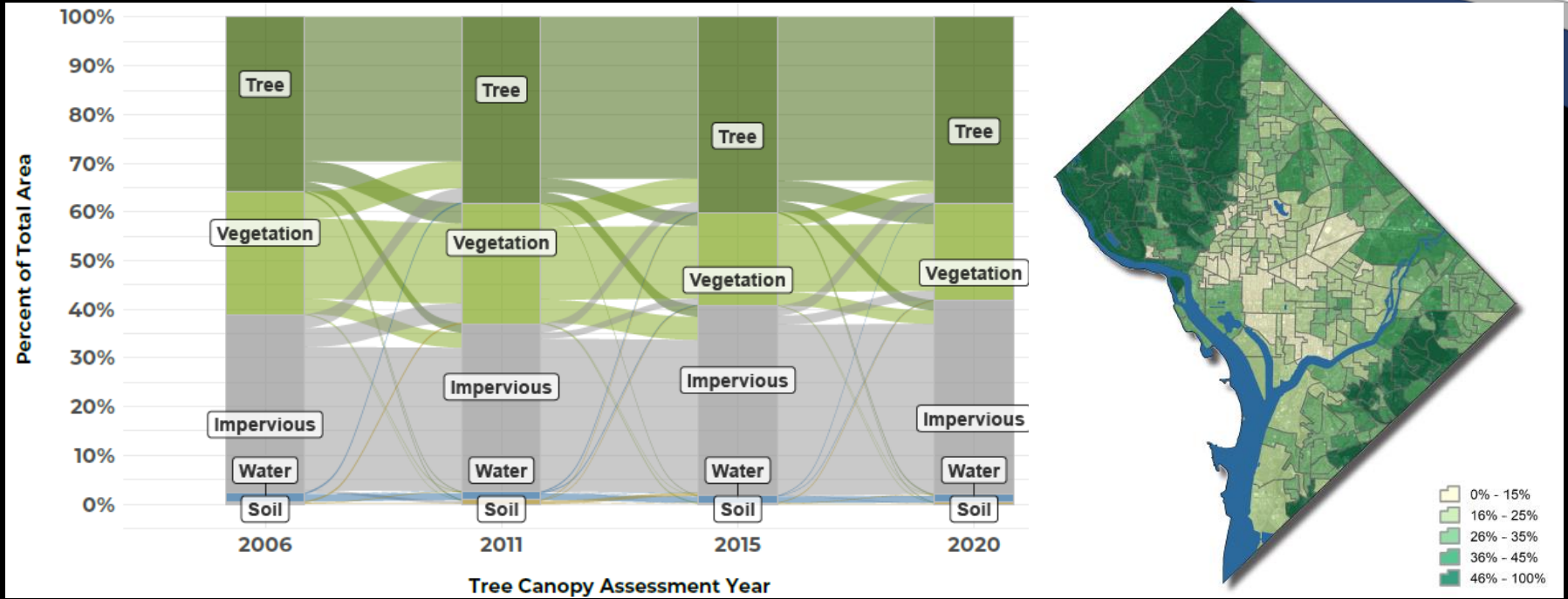
Tree Box Status

- Open
- Plant

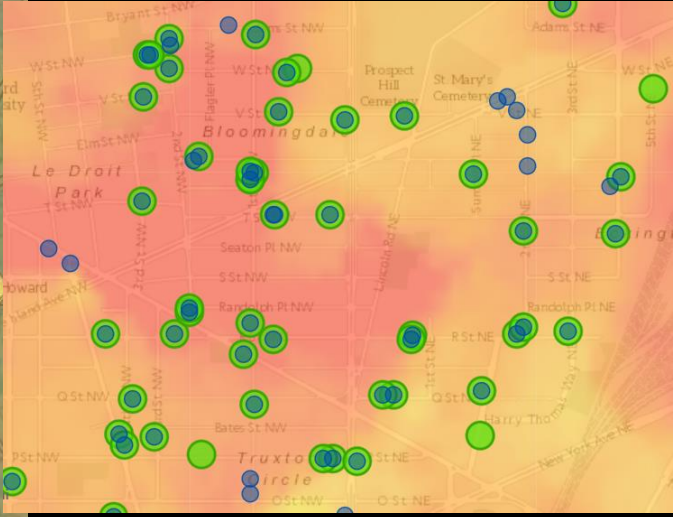
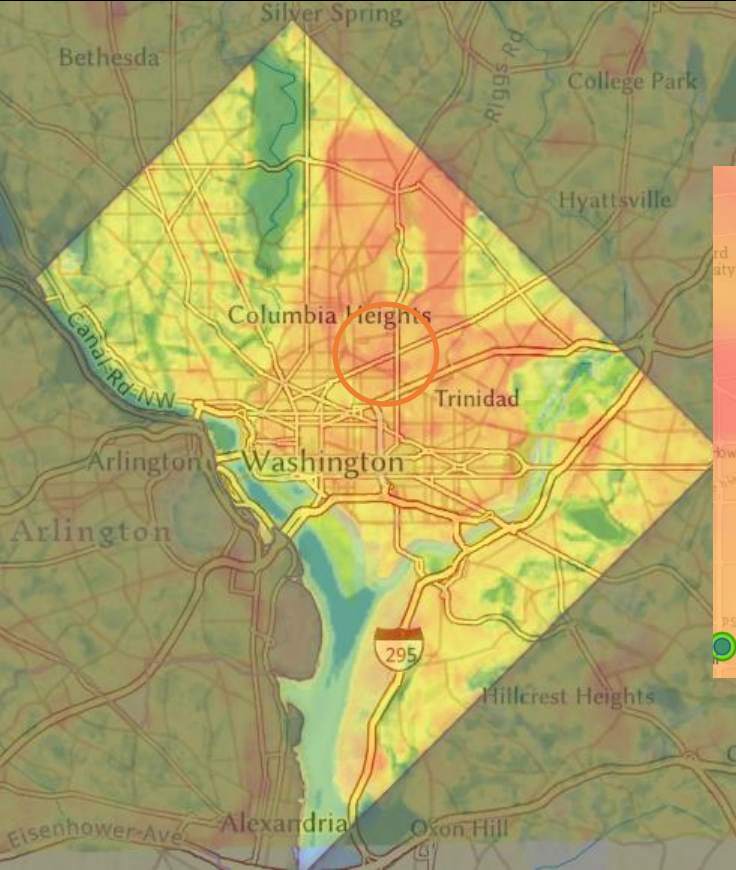
Total Number of Public Trees

1	10,886
2	17,855
3	31,728
4	29,868
5	26,095
6	19,416
7	30,377
8	20,675
Grand Total	186,900

Reaching our 40% urban tree canopy goal



Use urban heat island data to prioritize trees in the hottest neighborhoods.

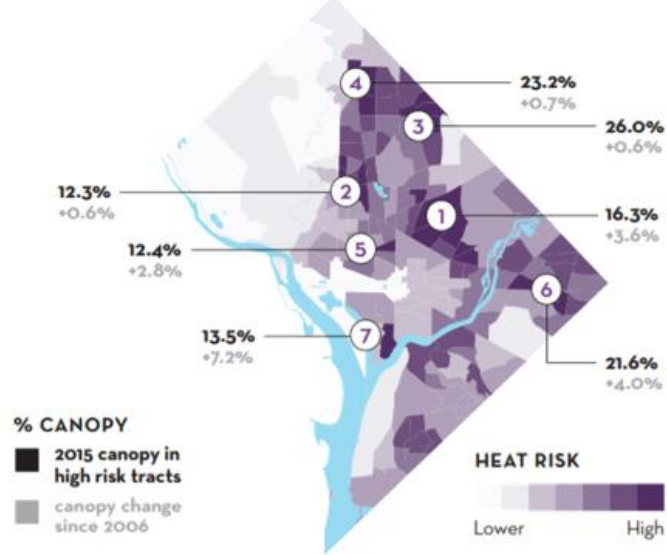


Legend

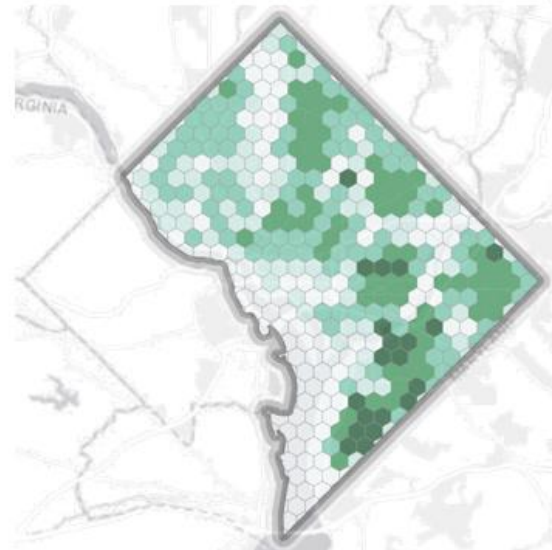
- Open Tree Space
- Upcoming Planting Work Orders

Planting trees where they are needed most

Heat sensitivity index



2015 - 2020 Tree Planting



Sensitivity/Exposure index combines data on income, age, race, English proficiency, asthma, disability, obesity, coronary heart disease, air temperature, impervious surface, and tree canopy.

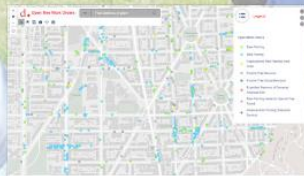
What can residents do? - Collaborate

<https://trees.dc.gov/pages/tree-services>

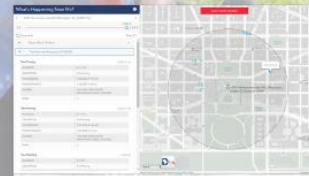
- ✓ Request Tree Inspection
- ✓ Request Tree Planting
- ✓ Request Tree Pruning
- ✓ Request Tree Removal



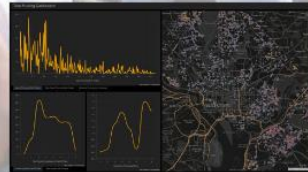
Open Service Requests



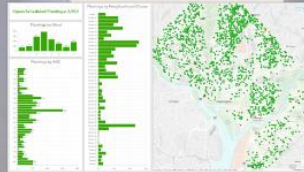
Scheduled Services



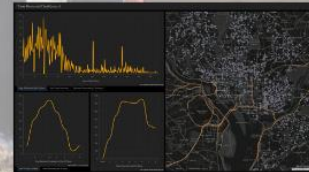
What's Happening Near Me?



Pruning Report



Open / Planned Planting



Removal Report

Plant and Care for Trees

<https://www.riversmarthomes.org/shadetrees>

RESIDENTIAL TREE SELECTION GUIDE



MEDIUM SHADE TREES

RED MAPLE | *Acer rubrum*



Height: 40-60'
Width: 40-60'
Exposure: Full Sun to Part Shade
Soil: Wet to Well-Drained
Adaptability: Full Sun to Part Shade
Form: Round
Notes: Roots may grow close to soil surface. Tree should not be planted close to pavement/structures.

RIVER BIRCH | *Betula nigra*



Height: 35-50'
Width: 30-40'
Exposure: Full Sun to Part Shade
Soil: Wet to Well-Drained
Adaptability: Full Sun to Part Shade
Form: Pyramidal
Notes: Attractive exfoliating bark. Drought tolerant.

BLACKGUM | *Nyssa sylvatica*



Height: 50-50'
Width: 20-30'
Exposure: Full Sun to Part Shade
Soil: Moist to Well-Drained
Adaptability: Full Sun to Part Shade
Form: Oval, upright
Notes: Drought and salt tolerant. Small fruits attract birds in fall.

YELLOWWOOD | *Cladrastis kentuckea*



Height: 50-50'
Width: 40-50'
Exposure: Full Sun to Part Shade
Soil: Moist to Well-Drained
Adaptability: Full Sun to Part Shade
Form: Vase/Spreading
Notes: Smooth bark. White bloom in May/June.

HONEY LOCUST | *Gleditsia triacanthos*



Height: 40-60'
Width: 30-40'
Exposure: Full Sun to Part Shade
Soil: Wet to Well-Drained
Adaptability: Full Sun to Part Shade
Form: Oval/Spreading
Notes: Drought/Salt tolerant. Nodding shade.

BASSWOOD | *Tilia americana*



Height: 30-60'
Width: 30-60'
Exposure: Full Sun to Part Shade
Soil: Moist to Well-Drained
Adaptability: Full Sun to Part Shade
Form: Oval
Notes: Drought tolerant. Small, fragrant flower in June.

AMERICAN HOLLY | *Ilex opaca*



Height: 35-50'
Width: 15-30'
Exposure: Full Sun to Part Shade
Soil: Moist to Well-Drained
Adaptability: Full Sun to Part Shade
Form: Pyramidal, upright
Notes: Attractive red berries in winter. Attracts birds in winter months.

SOUTHERN MAGNOLIA | *Magnolia grandiflora*



Height: 50-80'
Width: 20-40'
Exposure: Full Sun to Part Shade
Soil: Moist to Well-Drained
Adaptability: Full Sun to Part Shade
Form: Pyramidal
Notes: Attracts birds in winter. Large white flowers in early summer.

PAWPAW | *Asimina triloba*



Height: 20-25'
Width: 15-20'
Exposure: Full Sun to Part Shade
Soil: Wet to Well-Drained
Form: Oval
Notes: Fruit producing native tree with lustrous dark-green leaves.

RESIDENTIAL TREE SELECTION GUIDE

Jaxson Mack | Arborist | jmack@caseytrees.org
Cecilia McCrary | Arborist | cmccrary@caseytrees.org

Homeowners are encouraged to consider the long term benefits of well-placed, long-lived, large canopy trees. These benefits include increased storm water capture, cooler urban temperatures, lower cooling bills, increased native wildlife habitat, and improved quality of life. Planting for tree canopy is an investment in the health of our city in the future.

Height and width information reflects the expected mature size considering the cultivated varieties ("cultivars") of each tree that we commonly plant. It can take 40 to 100 years for a tree to achieve mature size and that size will vary depending on site conditions (soil quality, available moisture, available light, etc.).

For more information visit caseytrees.org/planting

LARGE SHADE TREES

AMERICAN BEECH | *Fagus grandifolia*



Height: 50-70'
Width: 50-70'
Exposure: Full Sun to Full Shade
Soil: Moist to Well-Drained
Form: Oval
Notes: Attractive smooth bark. Leaves stay on tree for color into winter. Small edible nutlet produced in fall.

LONDON PLANE | *Platanus X acerifolia*



Height: 90-100'
Width: 60-80'
Exposure: Full Sun
Soil: Wet to Well-Drained
Form: Spreading
Notes: Drought tolerant. Attractive bark.

OAK | *Quercus sp.*



Height: 40-100'
Width: 40-80'
Exposure: Full Sun to Part Shade
Soil: Moist to Well-Drained
Form: Round, Spreading
Notes: Drought Tolerant. After 20 years of growth, will start producing acorns. Long lived, valuable canopy. High value to native wildlife.

Quercus oak species available, some of them: <https://www.caseytrees.org>

BLACK WILLOW | *Salix nigra*



Height: 30-60'
Width: 30-60'
Exposure: Full Sun to Part Shade
Soil: Can tolerate dry soil
Form: Vase
Notes: Spring flowers provide nectar for bees and pollinators.

BALD CYPRESS | *Taxodium distichum*



Height: 50-70'
Width: 20-30'
Exposure: Full Sun to Part Shade
Soil: Wet to Well-Drained
Form: Pyramidal, upright
Notes: Drought tolerant.

SYCAMORE | *Platanus occidentalis*



Height: 40-50'
Width: 30-40'
Exposure: Full Sun
Soil: Tolerates a variety prefer moist
Form: Pyramidal, Rounded
Notes: Resistant to pollution, salty soils and other urban stressors.

SMALL ORNAMENTAL TREES

Availability restricted, check with Casey Trees Arborist to see if your yard qualifies for a small ornamental tree.

SERVICEBERRY | *Amelanchier sp.*



Height: 20-25'
Width: 15-20'
Exposure: Full Sun to Part Shade
Soil: Moist to Well-Drained
Form: Vase
Notes: White flowers in early spring. Edible berries in early summer.

AMERICAN HORNBEAM | *Carpinus caroliniana*



Height: 20-30'
Width: 20-30'
Exposure: Full Sun to Full Shade
Soil: Moist to Well-Drained
Form: Rounded
Notes: Attractive smooth bark.

EASTERN REDBUD | *Cercis canadensis*



Height: 15-35'
Width: 15-30'
Exposure: Full Sun to Part Shade
Soil: Moist to Well-Drained
Form: Rounded
Notes: Pink flowers in early spring.

FLOWERING DOGWOOD | *Cornus florida*



Height: 20-30'
Width: 20-30'
Exposure: Full Sun to Part Shade
Soil: Moist to Well-Drained
Form: Rounded
Notes: White flowers in early spring, showy red fruits in summer and fall.

SWEETBAY MAGNOLIA | *Magnolia virginiana*



Height: 15-30'
Width: 10-20'
Exposure: Full Sun to Part Shade
Soil: Wet to Well-Drained
Form: Pyramidal
Notes: White flowers in spring. Evergreen.

WITCHHAZEL | *Hamamelis virginiana*



Height: 15-30'
Width: 15-25'
Exposure: Full Sun to Part Shade
Soil: Can tolerate a variety
Form: Rounded
Notes: A nice shade of yellow or yellow-orange in the fall.



Last updated July 2021

Tree Permits

Any residents and contractors who wish to plant, prune, or remove a tree within the public right of way must first obtain permission from the Department of Transportation and the Urban Forestry Division using the [Transportation Online Permitting System \(TOPS\)](#).

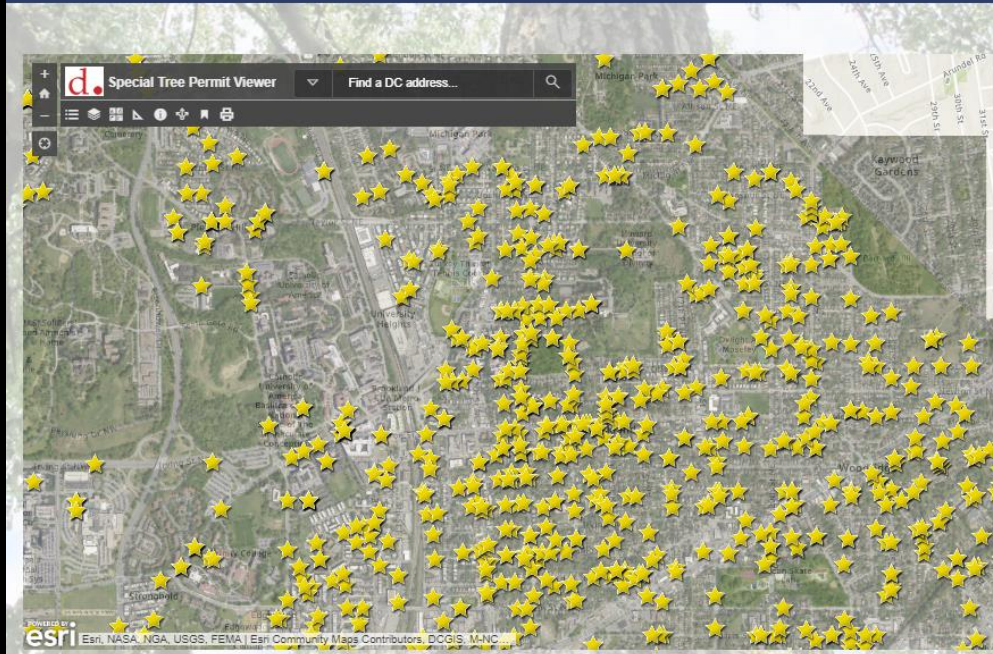
Use the interactive application below to see what tree permits have been issued relative to estimated special and heritage trees.

***		DEPARTMENT OF DISTRICT OF COLUMBIA DEPARTMENT OF TRANSPORTATION		d.
1900 4TH STREET NW, 2ND FLOOR, WASHINGTON, DC 20004		SPECIAL FORESTRY DIVISION/SPECIAL TREE PERMITTING DIVISION		
PERMIT NO. 1 243826				
Permittee Name: [REDACTED]	Approved By: [REDACTED]	Permit No.:	1900 4TH ST NW	
Number of Trees: 1	Permit Type: [REDACTED]	Permit Status:	1900 4TH ST NW	
Tree ID: [REDACTED]	Permit Date: [REDACTED]	Permit Fee:	1900 4TH ST NW	

Permittee to make permits for the 4000+ trees along or across 4th St. Identified trees at the address above show 4000+ trees and 4000+ trees. See the map for more information.

Special Tree Permit Viewer

The information of this tool is provided for informational purposes only. It is not intended to be used as a substitute for professional advice. The information is provided for informational purposes only. It is not intended to be used as a substitute for professional advice.



Thank you

Robert Corletta, Supervisory Forester

robert.corletta@dc.gov

DDOT Urban Forestry Division

<https://trees.dc.gov/>